

Building Tech Resilience for
Today's Digital Environment

**Be Ready to Face Constant
Change Without Interruption**



Tech Resilience

More important than ever

In today's rapidly evolving digital landscape, businesses are more reliant on technology than ever before. However, this reliance also makes them more vulnerable to disruptions, whether caused by cyberattacks, power outages, or natural disasters.

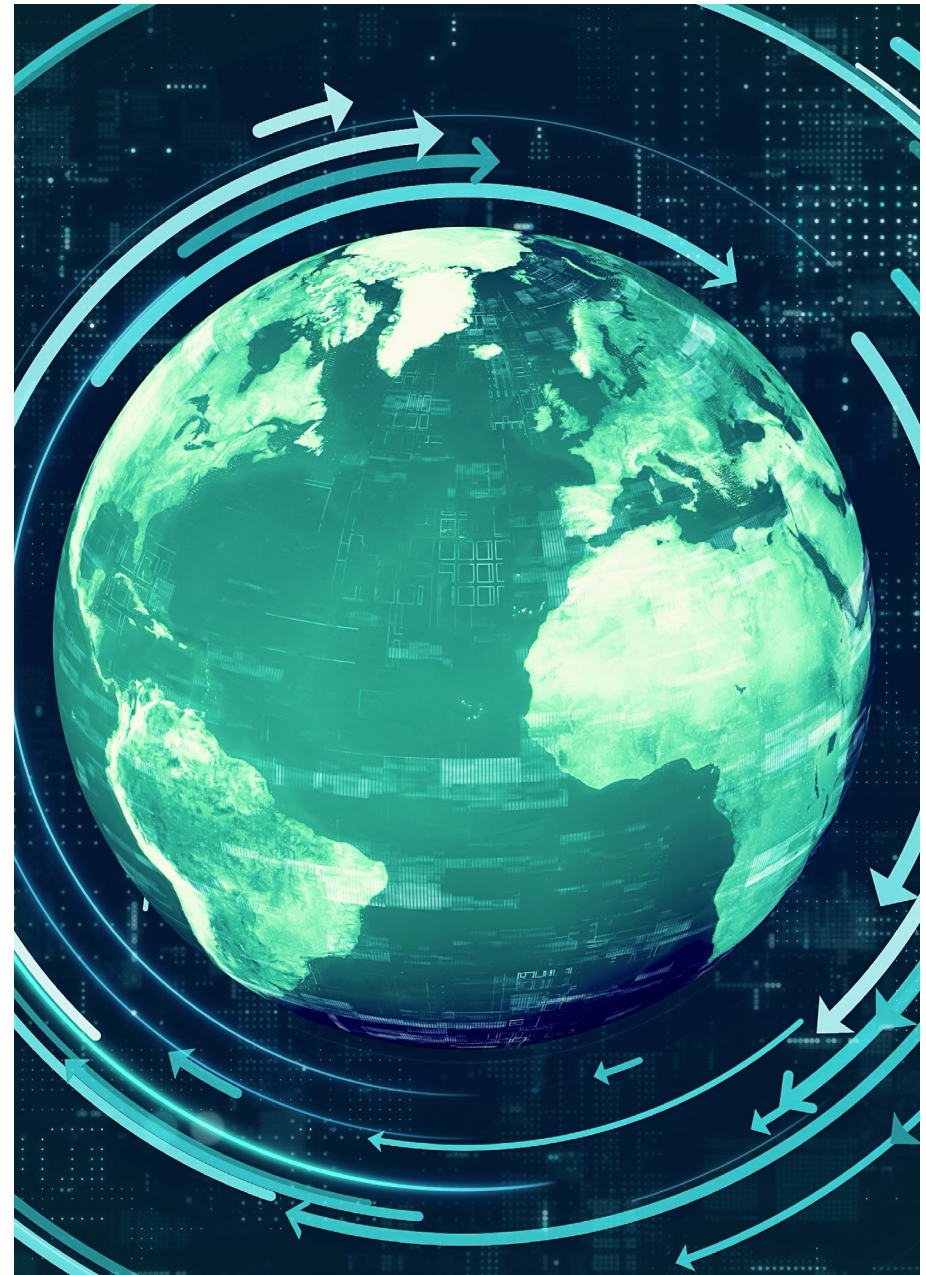
Tech resilience is the ability of a business to withstand and recover from these disruptions. It's not just about having a backup plan; it's about proactively building a system that can adapt to change and ensure business continuity.

Cloud Computing and Hybrid IT Environments: The widespread adoption of cloud services and the shift towards hybrid IT environments complicate resilience strategies. While cloud computing offers scalability and flexibility, it also introduces dependencies on third-party service providers, requiring robust service level agreements (SLAs) and continuity planning.

Cybersecurity Threats: Increasingly sophisticated cybersecurity threats, including ransomware, phishing, and state-sponsored attacks, directly impact tech resilience. Organizations must integrate cybersecurity measures with their resilience planning to protect against and quickly recover from such threats.

Digital Transformation: As businesses undergo digital transformation, their reliance on technology increases. This shift demands that resilience measures are embedded in the design of new digital services and platforms to ensure they can withstand disruptions without significant business impact.

Regulatory and Compliance Pressures: Regulatory requirements for data protection, privacy, and business continuity are becoming more stringent globally. Organizations must navigate these requirements to design resilience strategies that comply with legal and industry standards.



Building a Resilient Tech Ecosystem

There are several transformational objectives that are key to maturing an organization's overall tech resilience posture. Focusing on these outcomes will drive tighter alignment with business and establish a structure on which to build a more cohesive resilience program.

Enhanced Resilience & Business Continuity:

The primary outcome is strengthened technological resilience across the organization. This means disruptions are less likely to derail critical operations, and recovery time is minimized in the event of an incident.

Alignment with Business Objectives: Developing robust tech resilience capabilities should be done in the context of business priorities. Risks are assessed in the context of their potential impact on business goals, and the technology roadmap integrates resilience considerations proactively.

Improved Efficiency through Tiering: By implementing application resilience tiers tailored to specific target environments (cloud, on-premise, etc.), resources are allocated more strategically. This enhances efficiency, allowing for prioritization and the right level of protection for each application.

Stronger Governance & Collaboration: A clear tech resilience governance structure fosters accountability and streamlines decision-making. Defined roles and responsibilities improve collaboration and agility across teams.

Organization-Wide Compliance: Revised policies, standards, and procedures, tailored with resilience top of mind, drive consistent implementation. An aligned roadmap allows for the proactive modernization of applications to meet resilience requirements, resulting in wider compliance.

Stakeholder Buy-in: All stakeholders understand the revised policies, standards, and procedures. They understand their role in supporting enhanced tech resilience, leading to a culture of shared responsibility and smoother implementation.



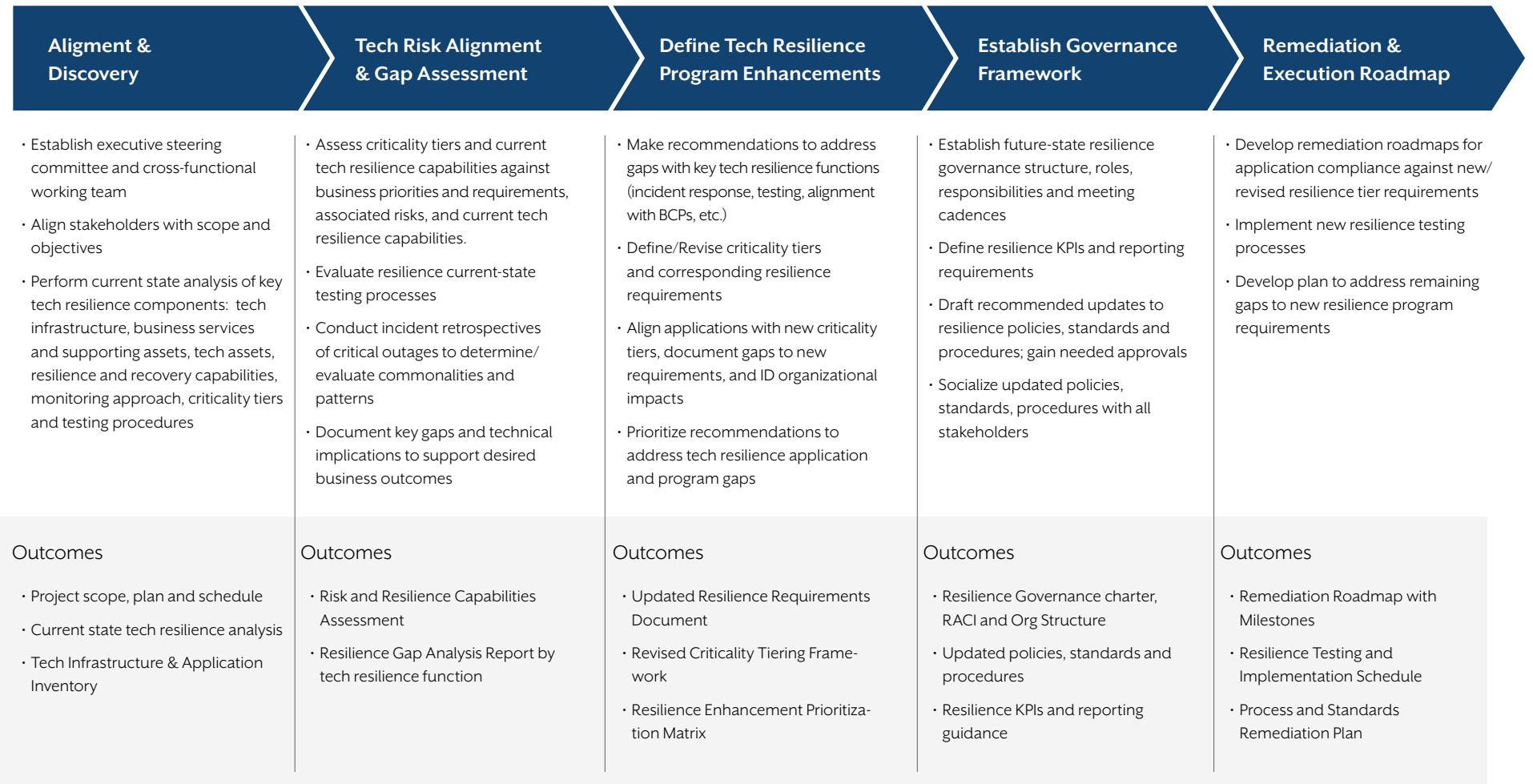
Focus Areas of Tech Resilience

As you embark on resilience transformation efforts, consider six fundamental tech resilience areas, each guided by risk assessments and aligned with key business priorities to strengthen your organization's tech resilience.



Tech Resilience Transformation: Approach, Activities, and Outputs

A Comprehensive Framework for Advancing Tech Resilience



Sample Operating Model

An effective resilience operating model strategically includes all critical stakeholder groups, forming specialized teams dedicated to developing and implementing robust and enduring tech resilience practices.



Continue your resilience journey with Infnitive

Infnitive specializes in enhancing technical and operational resilience plan through strategic alignment with business priorities and technology roadmaps, clear governance, and stakeholder adherence to future-state standards. We also improve vulnerability management, support observability adoption, and provide comprehensive solutions for cloud risk management.



Tech Resilience

Infnitive drives successful tech resilience transformations by aligning resilience strategies with business priorities and technology roadmaps, establishing clear governance, and ensuring stakeholder adherence to future-state resilience standards.



Operational Resilience

Infnitive helps companies get ahead of expected regulatory mandates to build holistic operational resilience programs that build upon business continuity planning and targeted tech resilience efforts.



Vulnerability Management

Infnitive enhances vulnerability management by developing tailored programs that align with business objectives, streamline asset inventories, and improve risk assessment and remediation—yielding a robust, compliant security posture.



Observability

Infnitive supports observability adoption at all stages, enhancing posture by identifying application downtime causes, ensuring architecture visibility for IT/business users, and proactively assessing system health and performance.



Cloud Risk, & Controls

Infnitive has a comprehensive set of solutions focused on cloud risk management, including lifecycle cloud control support, cloud service enablement and establishing policies, standards and procedures.



About Infinitive

Infinitive is a business and technology consultancy focused on Data and AI. At Infinitive we focus on Data Transformation, Cloud journey, Advanced Analytics, Observability, Artificial Intelligence, and IT Governance, Risk & Control.